



COMFORT+™

by Gabriel



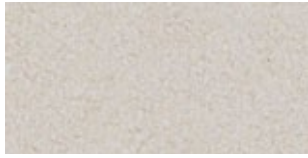
60005



8384



61002



60002



61016



280



1161



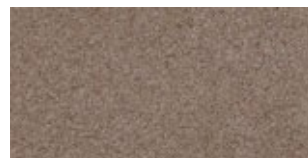
61003



9084



60003



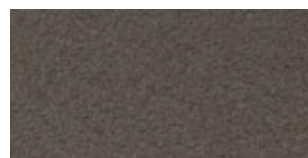
0004



0005



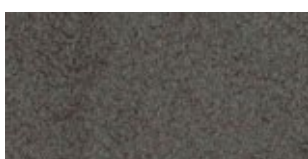
1012



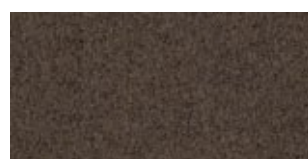
61014



0010



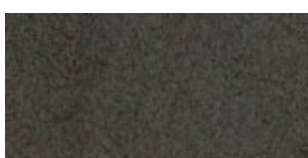
60008



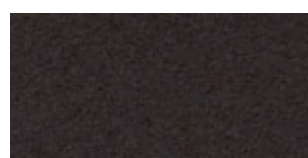
60004



61018



0049



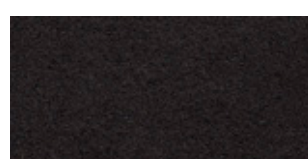
61013



61015



0050



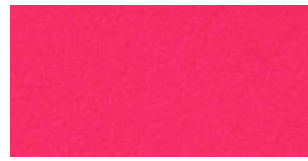
60009



1566



63001



64012



1043



63006



64014



65012



64002



64003



1147



0026



64013



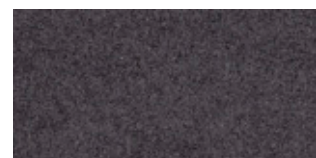
65003



9055



1414



66005



0028



0029



64009



1153



1163



0040



64001



1065



1167



1160



66002



67001



66010



8402



0035



67002



1160



66008



0033



9074



1124



0034



9075



66004



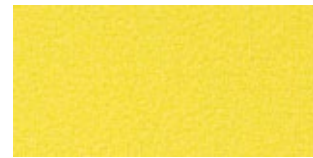
8422



68009



68008



62005



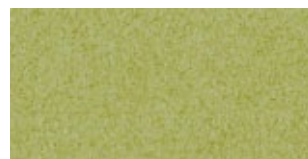
8397



1049



62003



68001



62004



68010



68011



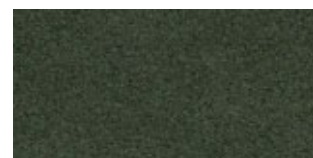
68007



68003



68000



0018

COMFORT+™

Comfort+ specifications: www.gabriel.dk

Please be aware that the PDF colour shades can appear different from the real fabric colours.
We advise you to request actual fabric samples before ordering.

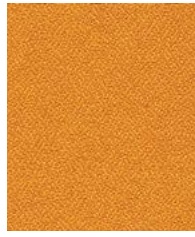


Xtreme

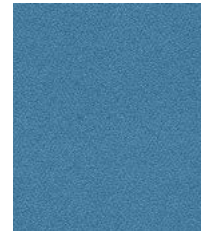
camira



Adobo
YS165



Solano
YS072



Parasol
YS073



Aruba
YS108



Tortuga
YS168



Bridgetown
YS102



Bluebell
YS097



Sandstorm
YS071



Lobster
YS076



Belize
YA105



Diablo
YS101



Nougat
YS091



Panama
YS079



Honeymoon
YS035



Tokara
YS136



Tarot
YS084



Ocean
YS100



Sombrero
YS046



Tobago
YS030



Cayman
YS024

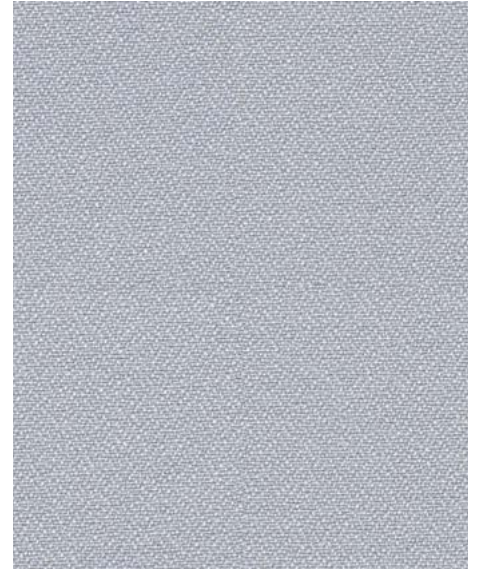
Photographic fabric scans are not colour accurate. Always request actual fabric samples before ordering.



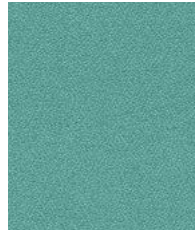
Steel
YS095



Madura
YS156



Rum
YS173



Campeche
YS074



Apple
YS096



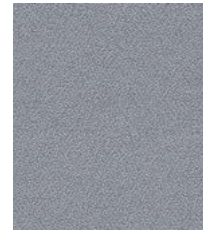
Martinique
YS004



Lombok
YS159



Appledore
YS077



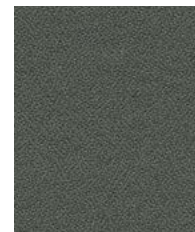
Slip
YS094



Scuba
YS082



Tonga
YS160



Krabi
YS141



Osumi
YS171



Curacao
YS005



Windjammer
YS047



Blizzard
YS081



Padang
YS145



Costa
YS026



Taboo
YS045



Bonaire
YS172



Havana
YS009



Task seating



Cigarette & Match



Medium Hazard B1



Washable



Environmental



Year guarantee

Xtreme is a modern crêpe weave fabric made from 100% post-consumer recycled polyester, diverting waste from landfill and saving virgin raw materials. Its stretch properties, coupled with inherent flame resistance, durability and non-pilling properties make Xtreme an ever popular fabric for task seating.



Technical information

UK

Industry Application

Workplace, Education, Hospitality & Leisure
When TriOnyx treated: Healthcare

Composition

100% post-consumer recycled polyester
Non metallic dyestuffs

Environment

Certified to the EU Ecolabel
Certified to OEKO-TEX® Standard 100
Made from 100% recycled polyester

Width

140 cm minimum

Weight

310 g/m² ±5% (435 g/lin.m ±5%)

Abrasion Resistance*

Heavy duty / 10 year guarantee
Independently certified to ≥100,000 Martindale cycles

Flammability

EN 1021 - 1 (cigarette)
EN 1021 - 2 (match)
BS 7176 Low Hazard
BS 5852 Ignition Source 5
BS 7176 Medium Hazard
DIN 4102 B1
NF D 60-013
ÖNORM B 3825 & A 3800-1 (over 58 kg/m³ CMHR foam)
UNI 9175 Classe 1 IM
BS 476 Part 7 Class 1 (Adhered)
Note: Flammability performance is dependent on components used. Our certificates show what substrates have been used in our tests. For composite tests customers must ensure their complete furniture meets the necessary standards.

Light Fastness

6 (ISO 105 - B02)

Fastness to Rubbing

Wet: 4, Dry: 4 (ISO 105 - X12)

Cleaning

Washable to 60°C. Vacuum regularly.
Wipe clean with a damp cloth or shampoo using proprietary upholstery shampoo.

*Abrasion testing produces a wide variability of results even from the same test sample. The independent certificate of ≥100,000 cycles is available on our website or from our customer service team. Internally we also specify this product at >100,000 cycles which we believe is realistic for repeatability of testing. Please be aware that abrasion testing alone is not a reliable indicator of the actual wear performance of fabrics. We're so confident in the durability of our products that we provide a robust 10 year guarantee (full details available). Please note that seam performance is dependent on seam construction and needle and thread type. We recommend that appropriate sewing advice be taken. Batch to batch variations in shade may occur within commercial tolerances. We reserve the right to alter technical specifications without notice. The Unregistered Design Rights and the Copyright in all designs are the exclusive property of Camira Fabrics Limited.

D

Einsatzbereich

Büro, Bildung, Hotellerie & Gastronomie
Wenn mit TriOnyx ausgerüstet:
Gesundheit & Pflege

Zusammensetzung

100% post-consumer recycelten Polyester
Nicht schwermetallhaltige Farbstoffe

Umweltfreundlich

Nach Zertifikat EU Ecolabel
Nach Zertifikat OEKO-TEX® Standard 100
Hergestellt aus 100% recycelten Polyester

Breite

140 cm nutzbare Breite

Gewicht

310 g/m² ±5% (435 g/lin.m ±5%)

Scheuerfestigkeit*

Schwerer Objekteinsatz /
10 Jahre Garantie
Extern zertifiziert mit ≥100,000 Scheuertouren Martindale

Feuersicherung

EN 1021 - 1 (Zigarettenstest)
EN 1021 - 2 (Streichholzstest)
BS 7176 Low Hazard
BS 5852 Ignition Source 5
BS 7176 Medium Hazard
DIN 4102 B1
NF D 60-013
ÖNORM B 3825 & A 3800-1 (mit 58 kg/m³ CMHR Schaum)
UNI 9175 Classe 1 IM
BS 476 Part 7 Class 1 (Adhered)
Note: Die Scheuerfestigkeitsprüfung hängt von den verwendeten Komponenten ab. Unsere Zertifikate zeigen auf, welche Substrate bei den Tests verwendet wurden. Bei Verbundtests muss sichergestellt sein, daß das komplette Möbel den entsprechenden Standards entspricht.

Lichtechtheit

6 (ISO 105 - B02)

Reibechtheit

Nass: 4, Trocken: 4 (ISO 105 - X12)

Reinigung

Waschbar bis 60°C. Regelmässig staubsaugen. Dazu mit einem feuchten Tuch abwischen, oder mit einem speziellen Polsterschaum behandeln.

*Die Scheuerfestigkeitsprüfung ergibt selbst bei gleichen Testmustern stark abweichende Ergebnisse. Das Zertifikat eines unabhängigen Prüfinstitutes über ≥100,000 Scheuertouren erhalten Sie von unserem Vertriebsinnendienst oder auf unserer Webseite. Intern spezifizieren wir auch dieses Produkt mit >100,000 Scheuertouren, die in der Serienfertigung als realistisch angenommen werden. Bitte nehmen Sie zur Kenntnis, dass die Scheuerfestigkeitsprüfung allein keine Aussagekraft über die Langlebigkeit eines Bezugsstoffes hat. Wir sind von der Langlebigkeit unserer Produkte überzeugt und bieten daher 10 Jahre Garantie (Details auf Anfrage). Eine optimale Nahtausreissfestigkeit hängt von der Nähfahne, der verwendeten Nadel und dem Näh-Garn ab. Wir empfehlen daher Nähversuche durchzuführen. Handelsübliche Farbabweichungen können auftreten und berechtigen nicht zur Reklamation. Wir behalten uns die Änderung technischer Spezifikationen vor. Die registrierten und nicht registrierten Urheberrechte der Dessinierungen sind ausschliessliches Eigentum der Camira Fabrics Limited.

F

Application industrielle

Lieu de travail, Education, Hôtellerie et loisirs
Si traitement TriOnyx: Services de santé

Composition

100% polyester recyclé post-consommation
Teintures non métalliques

Écologique

Avec le certificat EU Ecolabel
Certifié à OEKO-TEX® Standard 100
Fabriqué d'un polyester 100% recyclé

Largeur

140 cm minimum

Poids

310 g/m² ±5% (435 g/m.l ±5%)

Résistance à l'abrasion*

Usage intense / garantie 10 ans. Certificat indépendant ≥100,000 cycles Martindale

Flammabilité

EN 1021 - 1 (cigarette)
EN 1021 - 2 (allumette)
BS 7176 Low Hazard
BS 5852 Ignition Source 5
BS 7176 Medium Hazard
DIN 4102 B1
NF D 60-013
ÖNORM B 3825 & A 3800-1 (sur 58 kg/m³ CMHR mousse)
UNI 9175 Classe 1 IM
BS 476 Part 7 Class 1 (Adhered)
Note: La performance de flammabilité dépend des composantes utilisées. Nos certificats indiquent les substrats utilisés dans nos tests. Pour les tests composites, les clients doivent s'assurer que leurs meubles complets satisfont aux normes nécessaires.

Solidité à la lumière

6 (ISO 105 - B02)

Solidité au Frottement

Mouillé: 4, Sec: 4 (ISO 105 - X12)

Nettoyage

Lavable jusqu'à 60°C. Aspirer régulièrement. Essuyer avec une étoffe humide ou nettoyer à l'aide d'un produit approprié pour tissus d'ameublement.

*Les tests de résistance à l'abrasion proposent une large variété de résultat final, parfois sur le même échantillon de tissu. Le certificat indépendant de ≥100,000 cycles est disponible sur notre site internet; vous pouvez également contacter notre Service Clients. Nous validons également – en interne – à >100,000 cycles; ce qui est, d'après nous, plus réaliste dans le but d'obtenir une continuité égale des résultats de tests. Merci de noter que l'abrasion seule ne constitue pas un indicateur de confiance dans la performance du tissu à long terme. Nous avons une confiance absolue en nos produits et leur durabilité, c'est pour cela que nous vous offrons une garantie robuste de 10 ans. Veuillez noter que la performance du joint dépend de sa construction ainsi que de l'aiguille et du type de fil utilisés. Une variation de couleurs peut provenir (commerciallement tolérable). Nous réservons le droit de changer les spécifications techniques sans préavis. Les Droits de Conception non-enregistrés et les droits d'auteur de tous les motifs sont les propriétés exclusives de Camira Fabrics Limited.

ES

Aplicación Industrial

Puesto de Trabajo, Educación, Sector Hotelero & Placer
Estado con tratamiento TriOnyx:
Sanidad

Composición

Polyester reciclado 100% post consumido
Tintes no metálicos

Ambiental

Certificado con EU Ecolabel
Certificado de OEKO-TEX® Standard 100
Hecho de 100% de poliéster reciclado

Ancho

140 cm mínimo

Peso

310 g/m² ±5% (435 g/lin.m ±5%)

Resistencia a la abrasión*

Garantía de 10 años con uso intenso independientemente del certificado de ≥100,000 Ciclos Martindale

Inflamabilidad

EN 1021 - 1 (cigarillo)
EN 1021 - 2 (cerilla)
BS 7176 Low Hazard
BS 5852 Ignition Source 5
BS 7176 Medium Hazard
DIN 4102 B1
NF D 60-013
ÖNORM B 3825 & A 3800-1 (con CMHR 58 kg/m³ de espuma)
UNI 9175 Classe 1 IM
BS 476 Part 7 Class 1 (Adhered)
Note: El rendimiento de la inflamabilidad depende de los componentes usados. Nuestros certificados muestran qué substratos se han usado en nuestros tests. Para tests compuestos nuestros clientes deben asegurar si sus muebles cumplen la normativa al uso.

Solidez a la luz

6 (ISO 105 - B02)

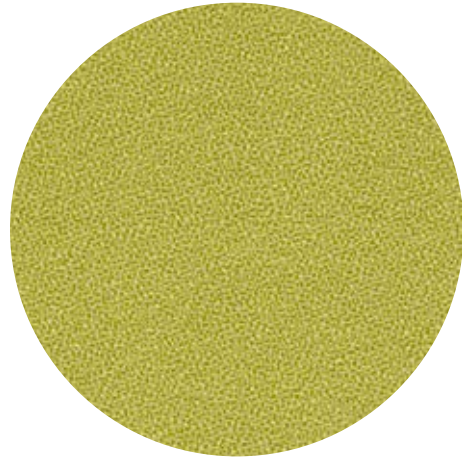
Solidez al rozamiento

Húmedo: 4, Seco: 4 (ISO 105 - X12)

Limpieza

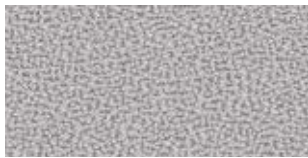
Lavable hasta 60°C. Limpiar con aspiradora frecuentemente. Bien lavar con un paño húmedo o con un champú apropiado para tapicería.

*Los Test de Abrasión producen unos resultados muy variables incluso con la misma muestra. El certificado de ≥100,000 ciclos Martindale está disponible en nuestra web o se puede pedir al Departamento Comercial. Internamente también certificamos este producto >100,000 ciclos, que pensamos que es lo más realista posible en este caso, con una repetición de resultados tan dispares. Tengan en cuenta que el Test de Abrasión solo no es un indicador fiable sobre el desgaste de un tejido. De hecho, estamos tan convencidos en la durabilidad de nuestros tejidos, que ofrecemos una garantía de 10 años (detalles completos disponibles). Tenga en cuenta que el rendimiento de la costura depende de la construcción de la costura, además de la aguja y del tipo de rosca. Le recomendamos que se aconsejen para coser la costura. Las variaciones de lote a lote en la sombra se puede producir dentro de tolerancias comerciales. Nos reservamos el derecho a efectuar modificaciones técnicas sin previo aviso. Los derechos sobre los diseños no registrados y los derechos de autor en todos los diseños son propiedad exclusiva de Camira Fabrics Limited.



GAJA CLASSIC™

by Gabriel



60001



60005



62010



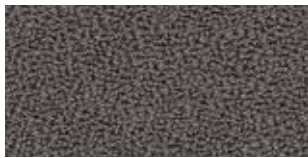
60029



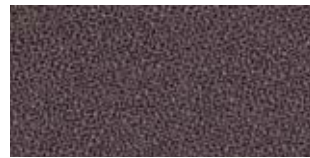
60007



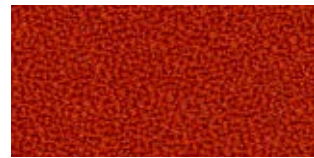
63016



60003



60022



63036



60019



61071



63004



60999



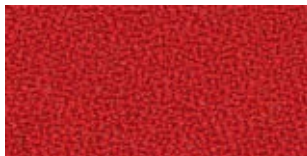
61044



61072



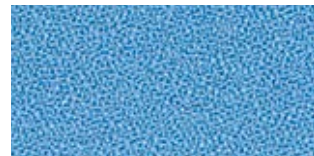
64023



64003



64096



66007



64095



64010



66010



64094



65011



66011



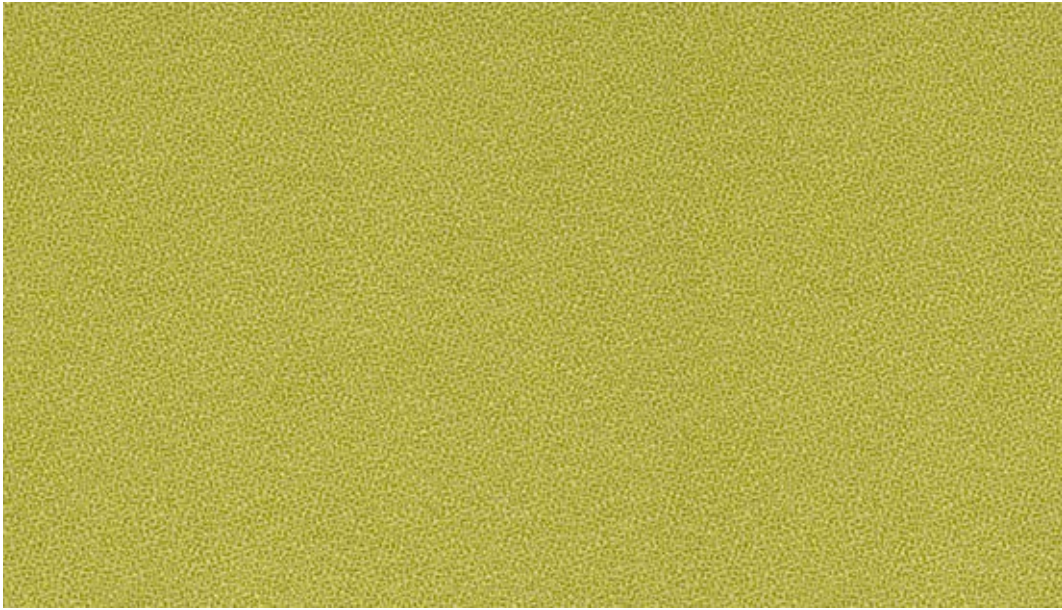
64089



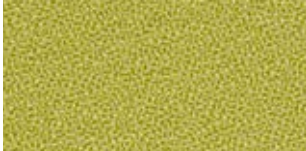
65012



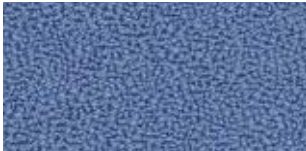
66009



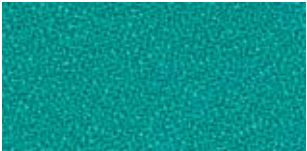
68024



68024



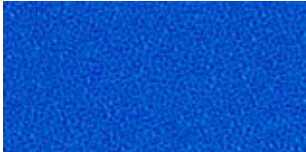
66002



67015



68013



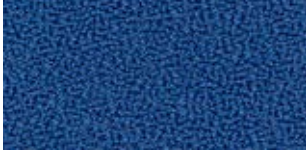
66013



67009



68002



66004



66057



68035



66005



67005



68048

GAJA CLASSIC™

Gaja Classic specifications: www.gabriel.dk

Please be aware that the PDF colour shades can appear different from the real fabric colours.
We advise you to request actual fabric samples before ordering.



Grano



Grano



Grano



Design
Climatex

Farben / Colours
18

Material Composition **Composizione** **Composition**
69 % PA
18 % WO
13 % CV

Nutzbreite / Nominal Width
141 cm

Gewicht / Weight
450 g/lfm

Scheuerfestigkeit / Abrasion resistance
465.000 Martindale, EN ISO 12947-2

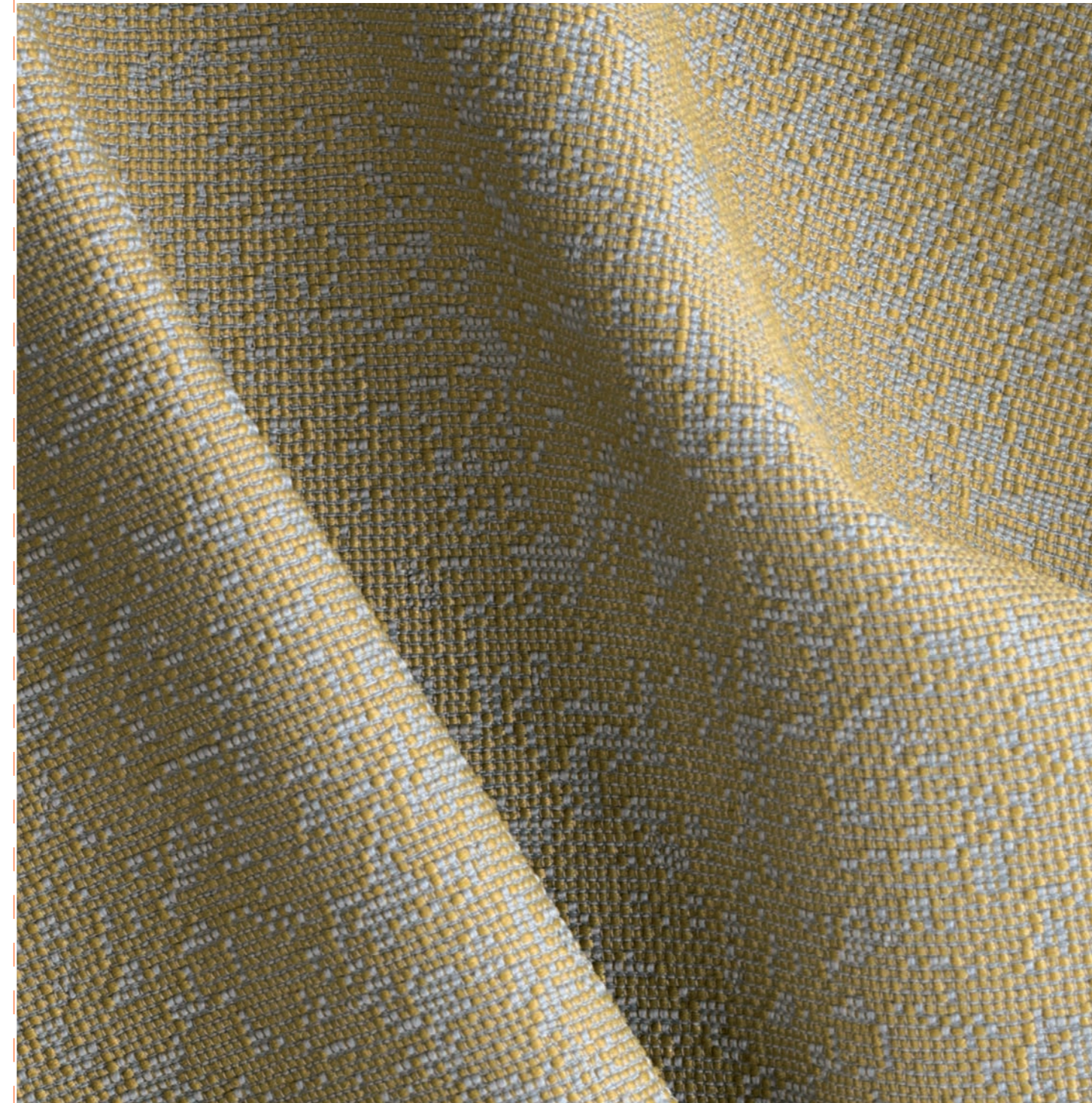
Pilling
4, EN ISO 12945-2

Lichtechtheit / Light fastness
6, EN ISO 105-B02

Reibechtheit / Rub fastness
dry 4 - 5, wet 4, EN ISO 105-X12

Brandnormen / Fire standards
EN 1021-1/2
BS 5852-0/1
California TB 117, Class 1

Pflege / Care



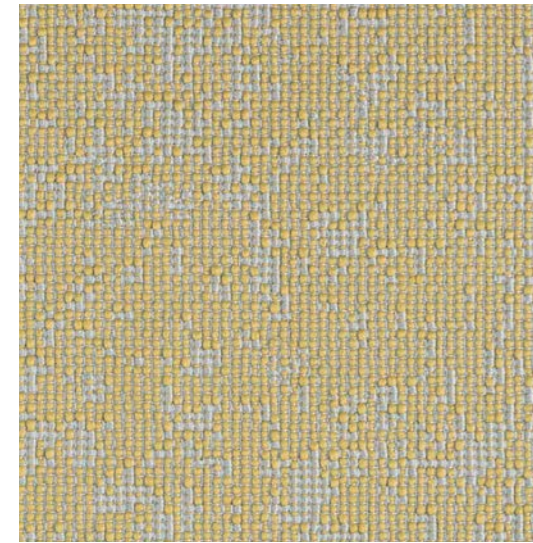
Printed in Cradle to Cradle®-process on Cradle to Cradle®-paper



JAB JOSEF ANSTOETZ KG
Potsdamer Str. 160
D-33719 Bielefeld
Tel.: +49 (0)5 21 / 20 93-636
E-mail: climatex@jab.de



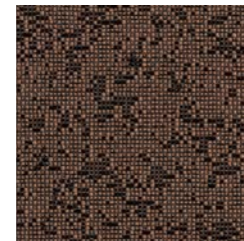
Grano



CX1056-030



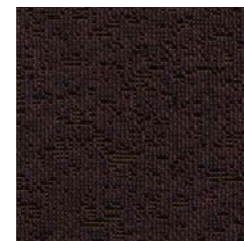
CX1056-020



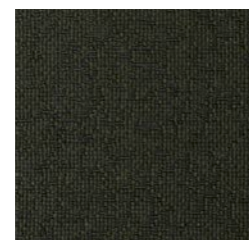
CX1056-021



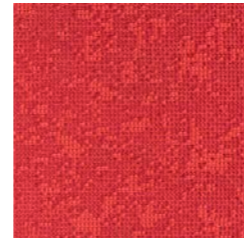
CX1056-070



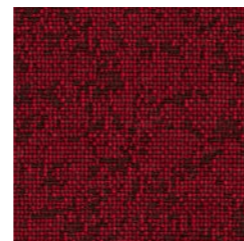
CX1056-022



CX1056-031



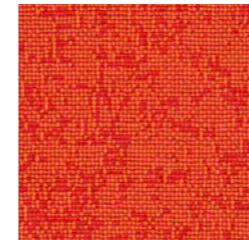
CX1056-010



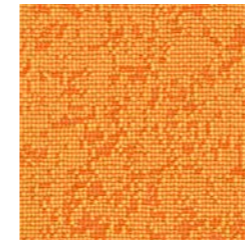
CX1056-011



CX1056-012



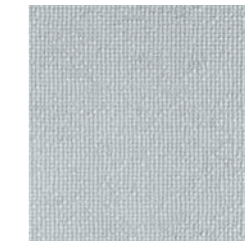
CX1056-061



CX1056-060



CX1056-092



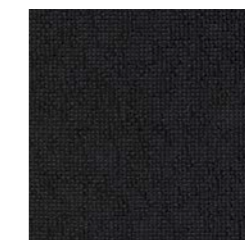
CX1056-091



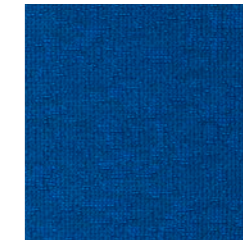
CX1056-093



CX1056-094



CX1056-099



CX1056-050



CX1056-051

NATURA



LE 123



LE 122



LE 128



LE 127



LE 126



LE 125



LE 131



LE 124



LE 129



LE 130



LE 121



LE 120

NATURA

Leder / Leather / Cuir / Leder



Zusammensetzung
Composition
Composition
Samenstelling
Premium quality,
through-dyed bull hides.



Dicke
Thickness
Épaisseur
Dikte
1,1 – 1,3 mm



Reibechtheit
Fastness to rubbing
Résistance au frottement
Wrijving
EN ISO 11-640
Dry/wet: grade 4/4



Lichtechtheit
Fastness to light
Solidité à la lumière
Lichtechtheid
EN ISO 105-B02 >5



Brandverhalten
Flammability
Réaction au feu
Brandwerendheid
EN 1021 part 1+2
BS 5852 part 1 sources 0 and 1
California TB117 A/1 and E/1



Schweissechtheit
Fastness to perspiration
Transpiration
Transpiratie
Grade 4

Beim Naturprodukt Leder sind leichte Farb- und Strukturabweichungen möglich. Narben, kleine Verletzungen und Mastfalten sind typische Merkmale und geben diesem Material seine Originalität.

Leather is a natural product – it may therefore vary in colour and structure. Grains, slight blemishes and fat wrinkles are typical features and lend this material its original character.

Le produit naturel qu'est le cuir peut présenter de légères variations de couleur et de structure. Ainsi, les grains, les petites écorchures et les rides d'engraissement sont des caractéristiques typiques conférant à ce matériau toute son originalité.

Bij het natuurproduct leder zijn geringe afwijkingen van kleur en structuur mogelijk. Het zijn juist de nerven, littekens en vetplooien die het product zo exclusief maken.

Änderungen und Farbabweichungen vorbehalten
Subject to modifications and colour variations
Sous réserve de modifications et de différences de couleur
Wijzigingen en kleurafwijkingen voorbehouden





Leather Design

skai® Palma



Fine Leather Look

Interior

Fine Leather Look

skai® Palma



skai® Palma



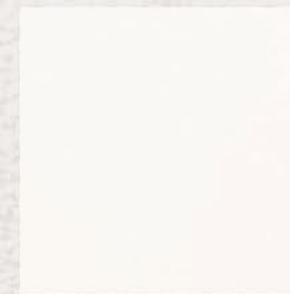
skai® Palma

Hochwertiges **skai®** Material mit feiner Kalbsledernarbung und einem dezenten Druckbild. Das Material ist universell einsetzbar und insbesondere für den Objektbereich, für öffentliche Gebäude und Einrichtungen geeignet.

High-quality **skai®** material with a fine-structured calf leather grain and a subdued printing. The material is all-purpose and especially suitable for the contract area, for public buildings and institutions.



skai® Palma limone F6411172



weiss F6410907



perle F6410702



gobi F6410703



mimosa F6410983



torf F6410705



inka F6410706



niger F6410707



kenia F6410708



kaschmir F6410709



lima F6410710



whisky F6410929



lachs F6410711



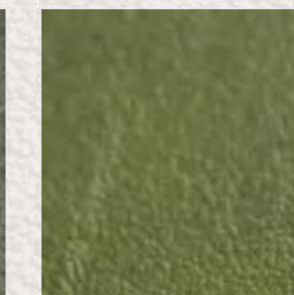
birke F6411169



fango F6411170



olivbraun F6411171



taiga F6410715



mango F6411060



feuer F6410994



rubin F6410927



limone F6411172



amazonas F6410926



tundra F6410716



rauchblau F6411059



sky F6411053



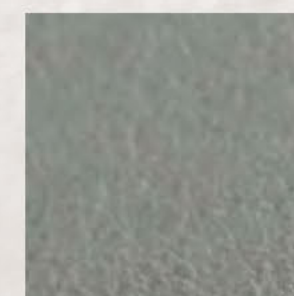
baltic F6410714



atoll F6410925



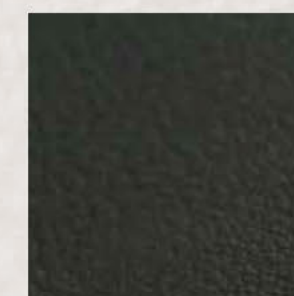
silbergrey F6411061



platin F6410713



anthrazit F6411062



schwarz F6410701

Fine Leather Look



contract



hospitality



residential



healthcare

Technische Eigenschaften

Materialzusammensetzung:

ca. 89% PVC-Compound

ca. 11% BW/PES-Gestrick

Gewicht: 825 +/- 50 g/m², **Dicke:** 1,3 +/- 0,2 mm

Rollenbreite: 137 cm, **Rollenlänge:** 30 m



langlebig



lichtecht



reißfest



pflegeleicht



desinfektionsmittelbeständig



abriebfest

DIN EN ISO 5470-2: > 50.000 Martindale



NF M2, BS 5852 IS-0+1, EN 1021-1+2, DIN 4102 (Part 1, B2), MVSS 302, DIN 53438 (Part 2), FAR 25.853, ÖNORM B3825 schwer brennbar (B1), ÖNORM A 3800-1 Q1, UNI 9175/87 (1.IM)



IMO FTPC P8

Technical properties

Material composition:

approx. 89% PVC-compound

approx. 11% CO/PES-knitted fabric

weight: 825 +/- 50 g/m², **thickness:** 1.3 +/- 0.2 mm

roll width: 137 cm, **roll length:** 30 m



long-lasting



lightfast



tear-resistant



easy to clean



resistant to disinfectants



abrasion-resistant

DIN EN ISO 5470-2: > 50.000 Martindale



NF M2, BS 5852 IS-0+1, EN 1021-1+2, DIN 4102 (Part 1, B2), MVSS 302, DIN 53438 (Part 2), FAR 25.853, ÖNORM B3825 schwer brennbar (B1), ÖNORM A 3800-1 Q1, UNI 9175/87 (1.IM)



IMO FTPC P8

Anwendung / Verarbeitung

Geeignet für viele Arten von Bepolsterungen und Bespannungen in der Polsterindustrie. Besonders geeignet für den Einsatz im trendorientierten Wohn- und Objektbereich, in öffentlichen Gebäuden und Einrichtungen. Problemlose Verarbeitung nach den üblichen Verfahren (Nähen, Heften, Kleben, Nageln). Keine Lösemittelkleber verwenden!

Sonstige Hinweise

Für dauerhafte Freude an ihrem **skai**® Material bitte regelmäßig reinigen. Verschmutzungen durch Öle, Fette und Tinte müssen umgehend entfernt werden. Benutzen sie hierzu eine warme, milde Seifenlauge und ein Mikrofasertuch oder eine weiche Handbürste. Bitte keine Lösemittel, Chloride, Poliermittel, chem. Reinigungsmittel oder Wachspoliermittel einsetzen. Bitte beachten sie, dass Anfärbungen durch Jeans oder andere Textilien von jeglicher Herstellergarantie ausgenommen sind.

Besondere Hinweise

Unsere anwendungstechnischen Empfehlungen in Wort und Schrift, die wir aufgrund unserer Erfahrung entsprechend dem aktuellen Kenntnisstand weitergeben, sind unverbindlich und begründen kein Rechtsverhältnis und keine Nebenverpflichtungen aus dem Kaufvertrag. Sie entbinden den Käufer nicht davon, unsere Produkte für den vorgesehenen Verwendungszweck in eigener Verantwortung selbst zu prüfen. Im Übrigen gelten unsere allgemeinen Geschäftsbedingungen. Hiermit verlieren alle früheren, anderslautenden Regelungen ihre Gültigkeit.

Application / Processing

Suitable for many kinds of upholsteries and coverings in the upholstery industry. Especially suitable for the use in the modern residential and contract area, in public buildings and institutions.

Problem-free processing in the usual procedures (sewing, tacking, sticking, nailing). Do not use solvent-based adhesives!

Other instructions

For durable joy with your **skai**® material, please clean regularly. Pollution by oil, fat and ink must be removed immediately. Clean with warm, mild soap lye and a micro-fibre cloth or a soft hand brush. Please, do not use solvents, chloride, abrasives, chemical cleaning agents or wax polishes. Please note that colorings by jeans or other textiles are excluded from any manufacturer's guarantee.

Special notes

Our written and spoken technical recommendations, which we provide based on our experience in accordance with the current state of knowledge, are nonbinding and do not constitute a legal relationship and are not additional obligations from the purchase agreement. They do not release the purchaser from checking our products for the intended use under his own responsibility. Otherwise, our general terms and conditions are in effect. All earlier provisions to the contrary hereby become invalid.



DIN EN ISO 9001
DIN EN ISO 14001
ISO/TS 16949



* nach den gesetzlichen Bestimmungen
prescribed by law

Members of the
Hornschuch Group



Konrad Hornschuch AG
Salinenstraße 1
74679 Weißbach
GERMANY
Telefon +49 7947 81-484
Telefax +49 7947 7059
skai.interior@hornschuch.de
www.skai.com
www.hornschuch.com

skai® is a trademark
of Konrad Hornschuch AG



STOLZENAU
Hornschuch Stolzenau GmbH
www.hornschuch-stolzenau.de



kek-Kaschierungen GmbH
www.kek-kaschierungen.de



O'Sullivan FILMS Inc.
1944 Valley Avenue
Winchester, Virginia 22601
USA
Phone 1-800-336-9882
info@osul.com
www.osul.com

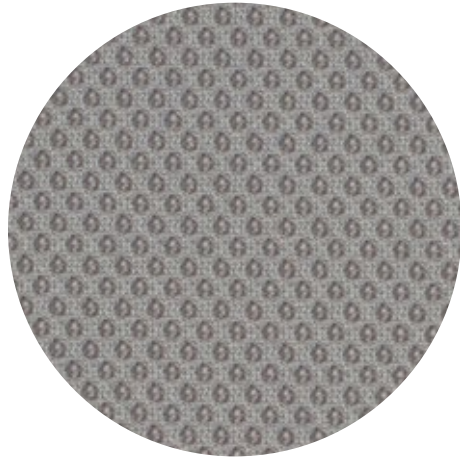
ClimatePartner
printed climate-
neutrality

K392-1204 / 01.16



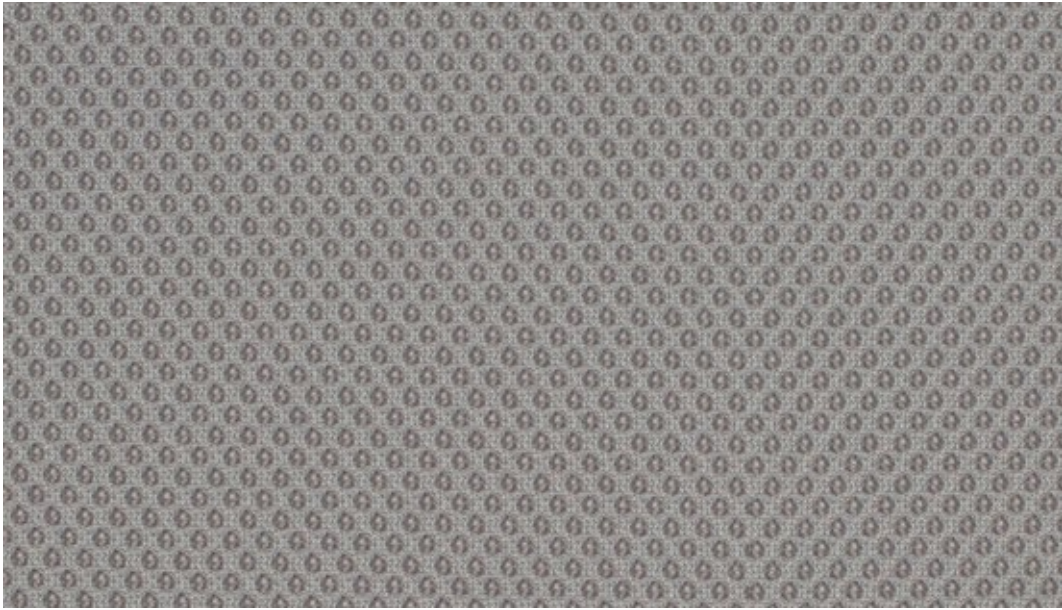
4 007386 919656

Q
e
R
i
Q



RUNNER™

by Gabriel



60165



60061



61128



60165



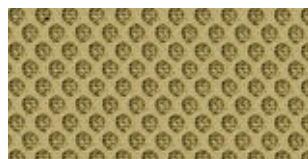
61110



63034



60011



62064



64119



60025



64089



60999



61129



61130



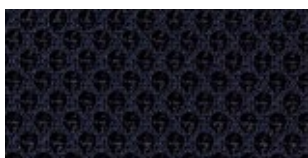
65078



66140



66123



66064



66063



66120



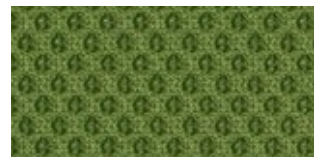
68137



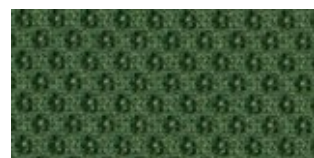
68108



68056



68109



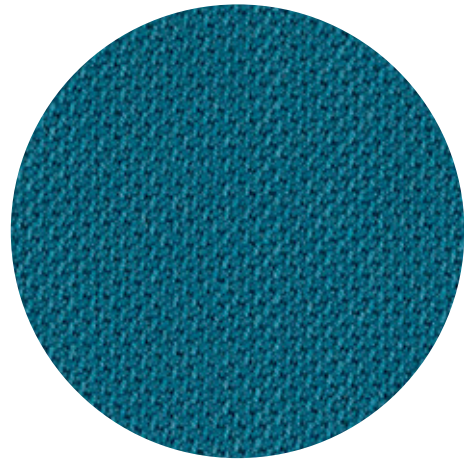
68110

RUNNER™

Runner specifications: www.gabriel.dk

Please be aware that the PDF colour shades can appear different from the real fabric colours.
We advise you to request actual fabric samples before ordering.





SELECT™

by Gabriel



60131



60005



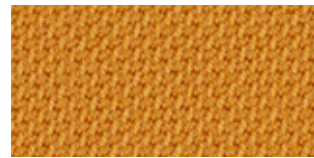
62097



60139



61188



62098



60003



60129



62100



60134



60130



61184



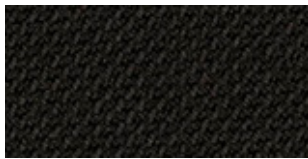
60051



60132



61189



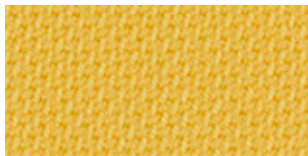
60999



60133



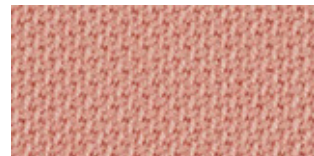
61187



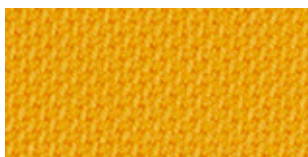
62103



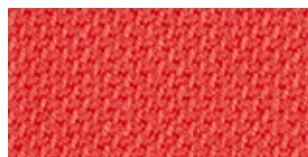
64214



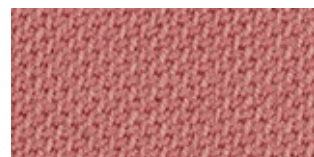
64213



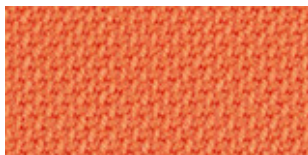
62099



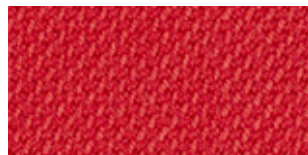
64215



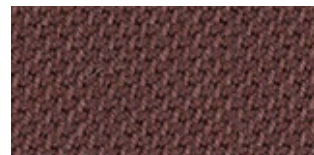
65117



63101



64216



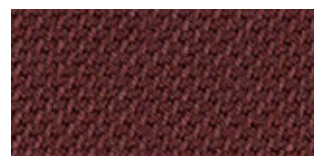
61185



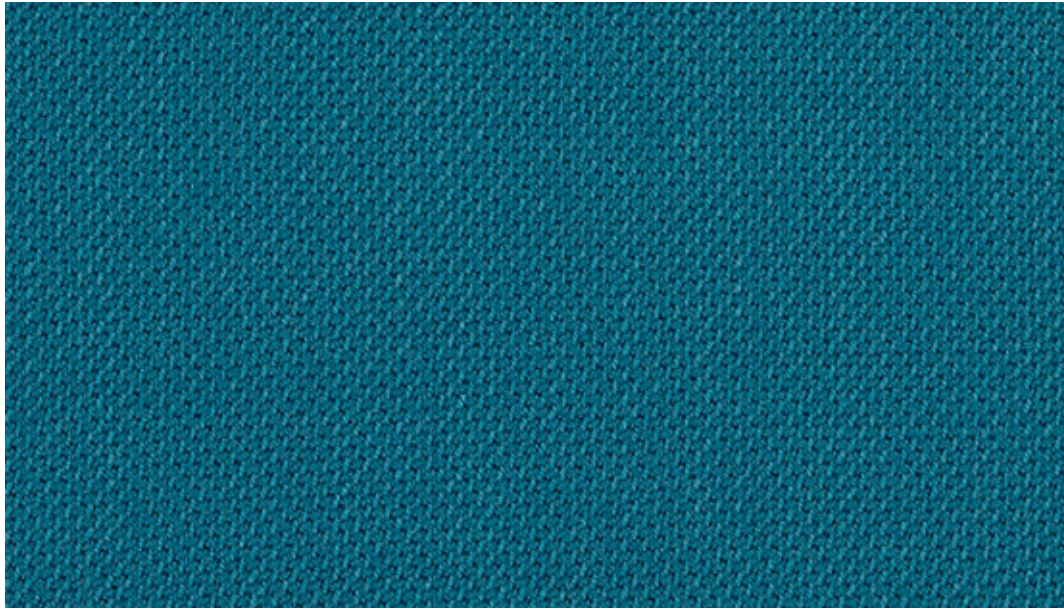
63102



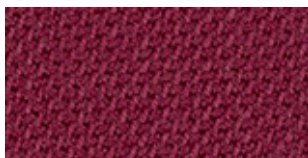
64089



61186



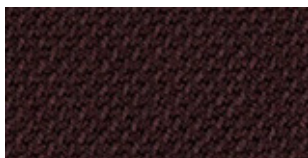
66192



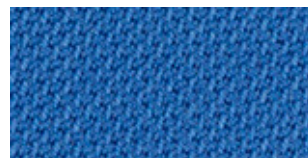
65114



67098



61190



66190



67097



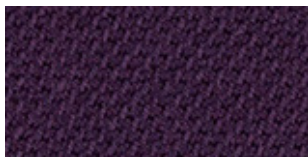
65116



66189



66191



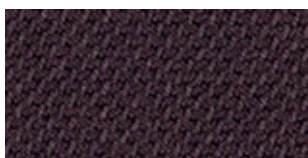
65077



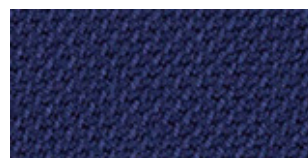
66075



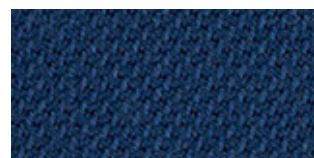
66192



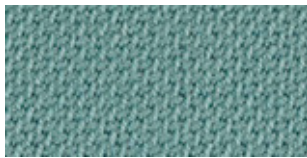
65115



66005



66071



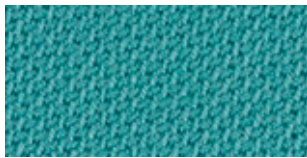
67101



68210



62104



67100



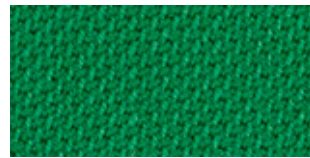
67094



67093



66193



68211



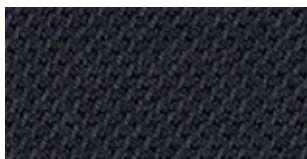
66194



67096



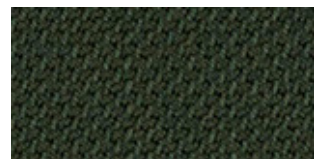
67095



66144



67099

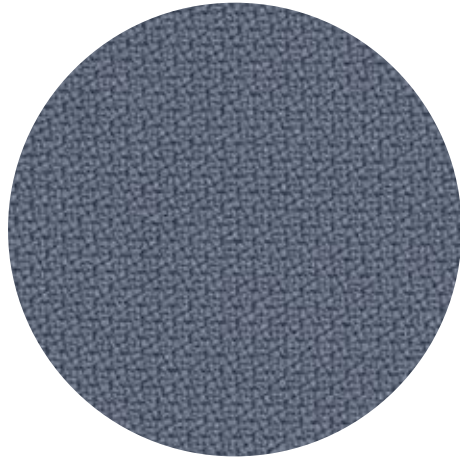


68209

SELECT™

Select specifications: www.gabriel.dk

Please be aware that the PDF colour shades can appear different from the real fabric colours.
We advise you to request actual fabric samples before ordering.

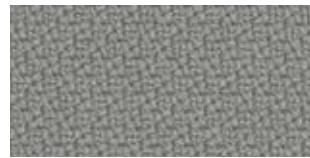


STEP™

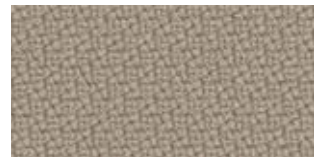
by Gabriel



60004



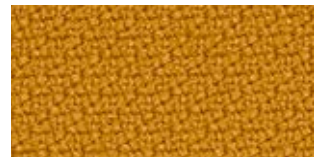
60091



61149



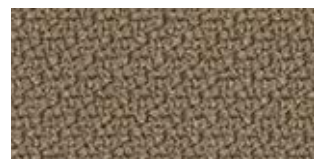
60011



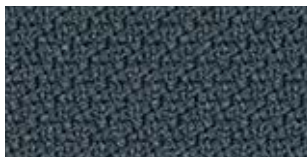
62057



60092



61103



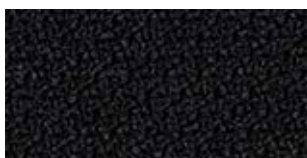
66019



60090



61150



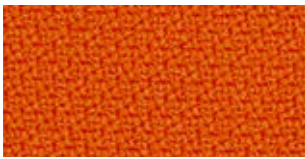
60999



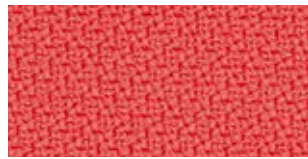
60089



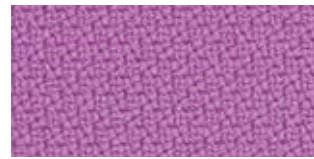
60021



63082



64178



65092



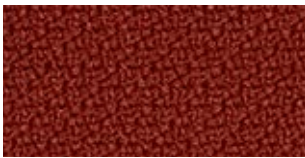
63012



64180



65023



63075



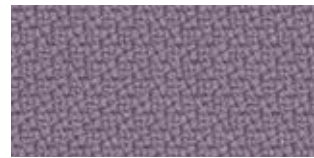
64179



65047



64177



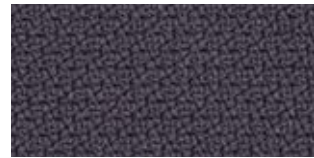
65093



64159



64013



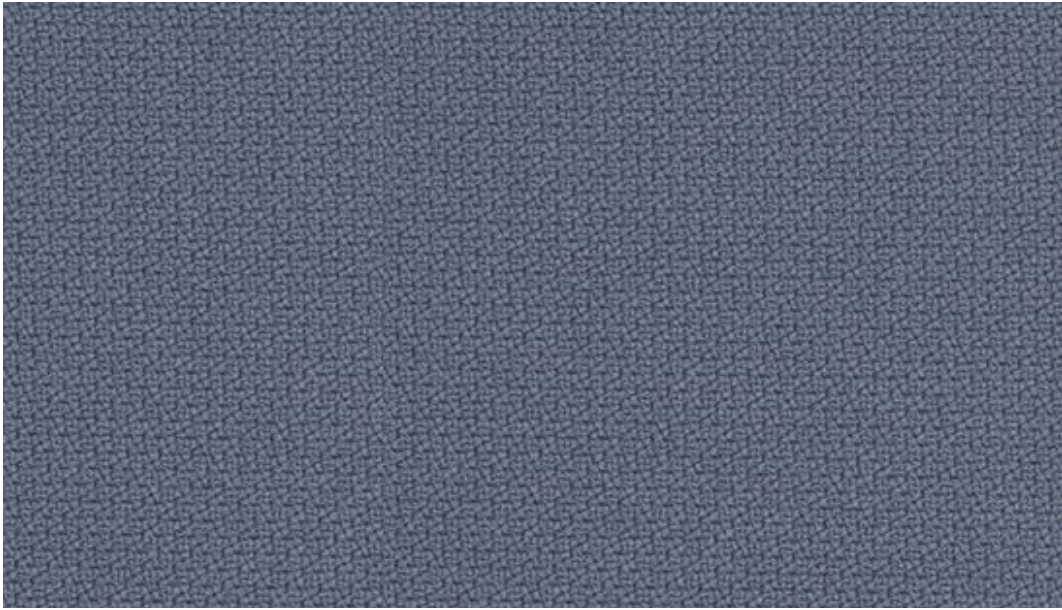
65094



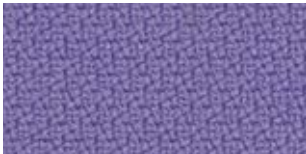
61102



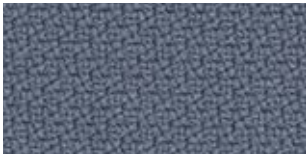
65095



66152



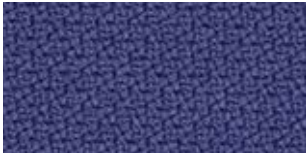
65090



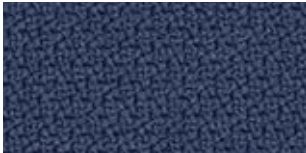
66152



67004



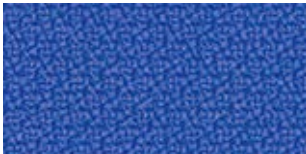
65091



66148



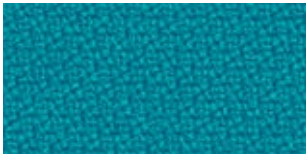
67072



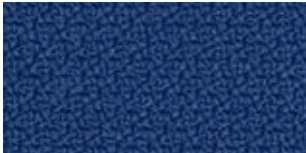
66150



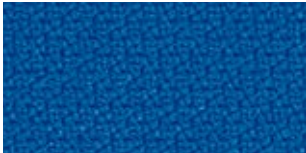
66018



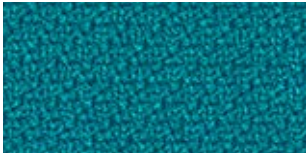
67073



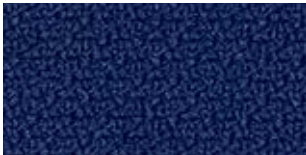
66149



66151



67007



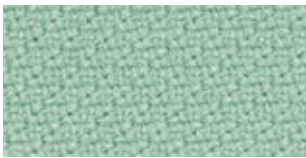
65018



65011



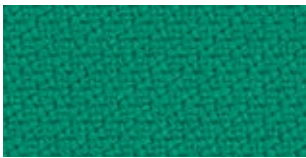
68158



68118



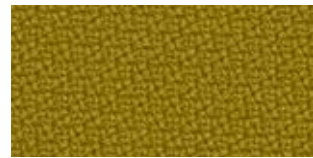
62073



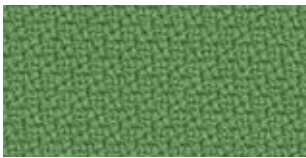
68157



68163



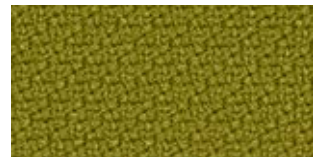
68164



68159



68162



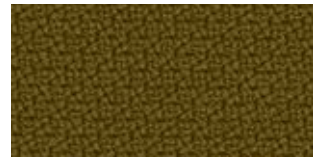
68119



68160



68120



68165



68161



68121

STEP™

Step specifications: www.gabriel.dk

Please be aware that the PDF colour shades can appear different from the real fabric colours.
We advise you to request actual fabric samples before ordering.



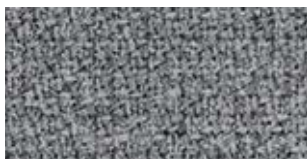


STEP MELANGE™

by Gabriel



61104



60004



61149



60011



60090



62057



60021



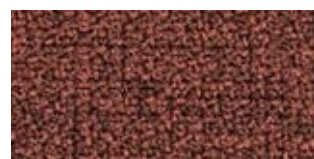
61152



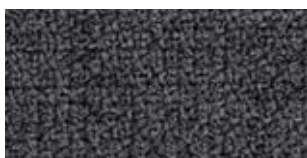
63082



61103



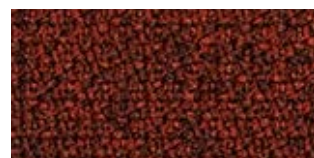
61151



60092



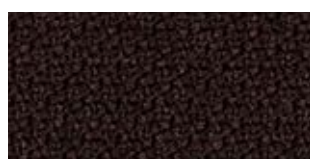
61150



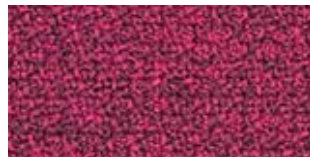
63075



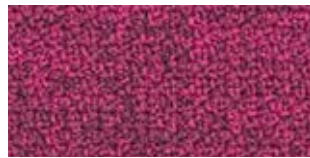
66019



61102



64177



64182



65093



64178



64181



65094



64179



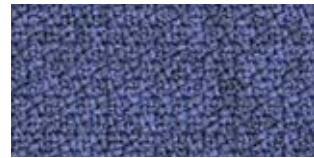
65092



64013



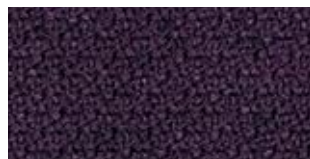
65023



65090



64159



65047



65091



66152



66018



66152



67004



66148



67072



66150



66151



67007



66149



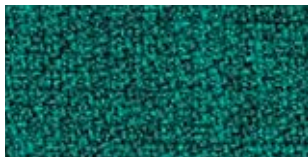
65018



65011



68118



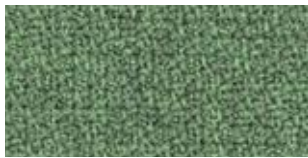
68157



68163



62073



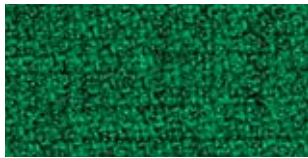
68159



68162



68119



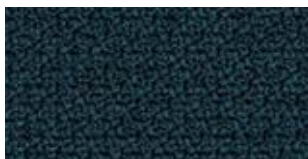
68160



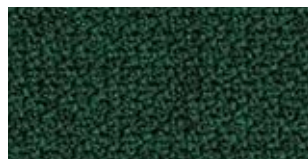
68120



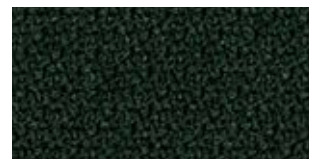
68165



68158



68161



68121

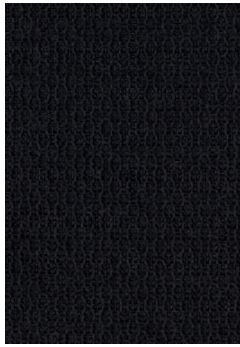
STEP MELANGE™

Step Melange specifications: www.gabriel.dk

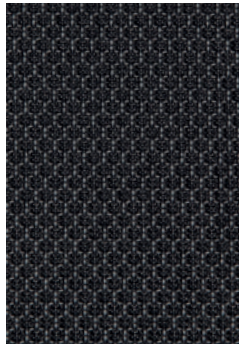
Please be aware that the PDF colour shades can appear different from the real fabric colours.
We advise you to request actual fabric samples before ordering.



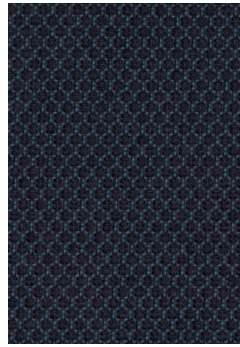
STRONG



STO099
STE099 (ESD)[Ⓐ]



STO091
STE091 (ESD)[Ⓐ]



STO050

STRONG



Zusammensetzung
Composition
Composition
Samenstelling
72 % Cradura (PA)
16 % Certified virgin wool (WV)
12 % Redesigned Lenzing FR™



Breite
Width
Largeur
Breedte
141 cm



Gewicht
Weight
Poids
Gewicht
437 g/m



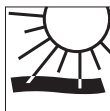
Scheuerverhalten
Abrasion resistance
Résistance à l'abrasion
Slijtvastheid
Martindale
EN ISO 12947-2
500'000 cycles



Pilling
Pilling
Boulochage
Pilling
EN ISO 12945-2
Grade 4



Reibechtheit
Fastness to rubbing
Résistance au frottement
Wrijftechtheid
EN ISO 105-X12
Dry/wet: grade 4-5 / 4-5



Lichtechtheit
Fastness to light
Solidité à la lumière
Lichtechtheid
EN ISO 105-B02
6-7



Brandverhalten
Flammability
Réaction au feu
Brandwerendheid
EN 1021 Part 1+2
BS 5852 Part 0+1
IMO Resolution MSC 307 (88);
Annex 1, part 8
UNI 9175, Classe UNO I EMME
California TB 117, Class 1



Schweissechtheit
Fastness to perspiration
Transpiration
Transpiratie
EN ISO 105-E04
Alkaline, Score 5
Acid, Score 5

Ⓐ Diese Farben in antistatischer Ausführung sind nicht Cradle to Cradle zertifiziert
These colours in an antistatic version are not Cradle to Cradle certified
Ces coloris dans la version antistatique ne sont pas certifié Cradle to Cradle
Deze kleuren in antistatische uitvoering zijn niet Cradle to Cradle gecertificeerd

Änderungen und Farbabweichungen vorbehalten
Subject to modifications and colour variations
Sous réserve de modifications et de différences de couleur
Wijzigingen en kleurafwijkingen voorbehouden

